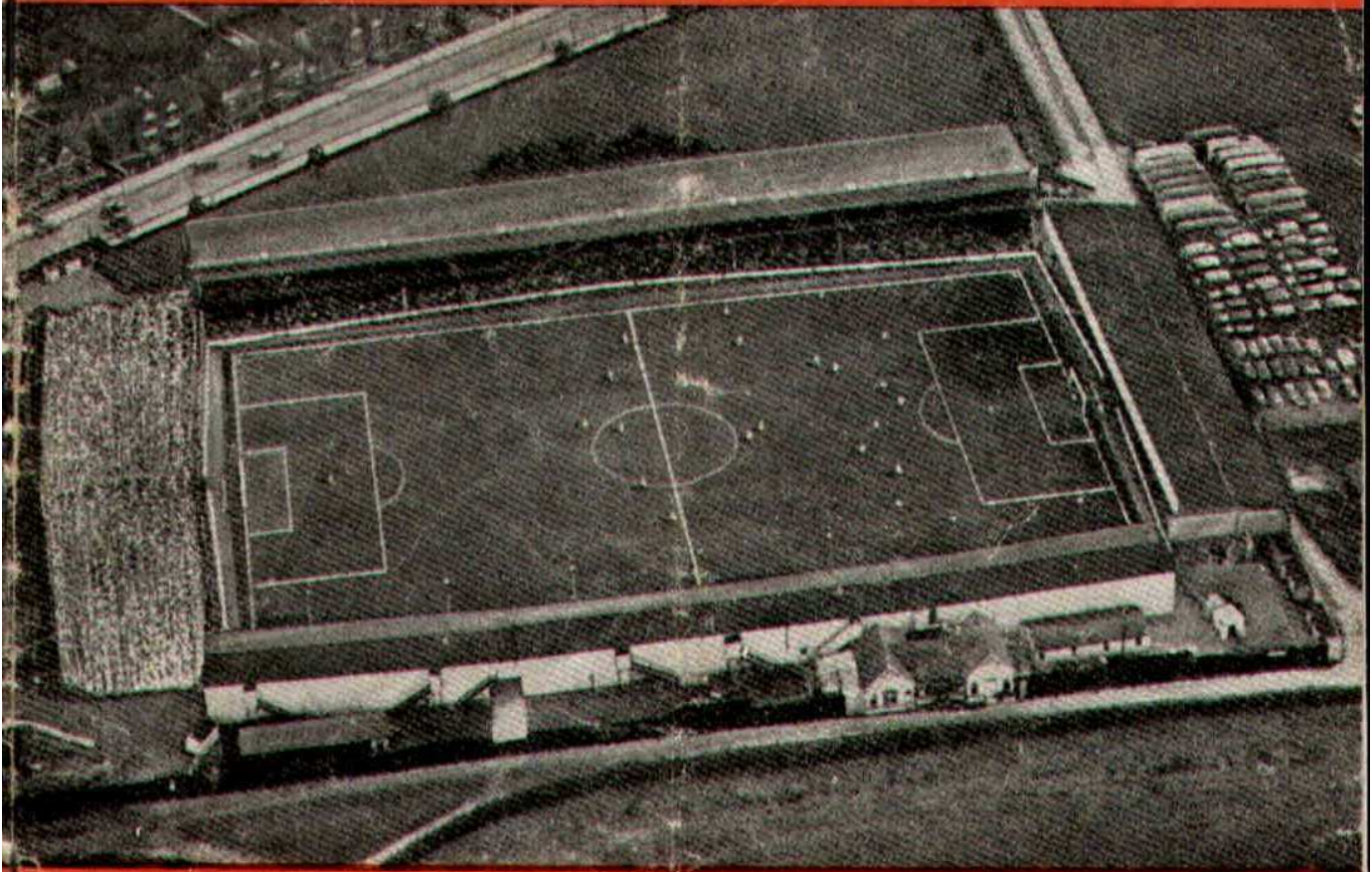




# SWINDON TOWN FOOTBALL CLUB



**SATURDAY, 21st APRIL, 1962**

**DIVISION III**

**SWINDON TN. v. NEWPORT C.**

**Kick-off 3 p.m.**

*Official Programme* **4d.**



---

**SOUTHERN LAUNDRY  
CO. LTD.**

*Launderers and Dry Cleaners*

→  
TELEPHONE 4161

STATION RD., SWINDON

GO MODERN — GO ELECTRIC

for

TELEVISION, RADIO AND  
DOMESTIC APPLIANCES

**D. ROBSON**

22 HAVELOCK STREET

6602

Swindon

6602

---

*Make your Goal the*

**EAGLE HOTEL**

(Prop.: Tom Hamilton)

WORTHINGTON :: GUINNESS

DEVENISH BEERS :: BASS

REGENT ST., SWINDON

---

**LITTLE & CO. LTD.**

The Name Linked with Service  
and Value

*The Popular Ladies' and Men's  
Complete Outfitters*

✦

31-32 FLEET ST., SWINDON

Telephone 22831

---

NEXT MATCH . . .

FOOTBALL COMBINATION

**SWINDON TN. v. BRENTFORD**

MONDAY NEXT, APRIL 23rd, 1962

Kick-off 3 p.m.

---

**Dr. BARNADO'S HOMES**

Take care of 7,500 needy children and  
still depend on public support

Send your donation to—

**Barnardo House, Stepney  
Causeway, London, E.1.**

Donated by: Mrs. S. Mutch, 60  
Cricklade Road, Swindon

---

**LEESE, ING & Co. Ltd.**

Incorporating BARKER & CO.

*Mineral Water and  
Squash Manufacturers*

◀

**LANSDOWN RD., SWINDON**

Telephone 22744/22320

---

**HULFORD MOTORS Ltd.**

SELF DRIVE HIRE

\*\*\*

Fleet of 1962 Fords  
Populars - Anglias - Consuls

\*\*\*

**SHRIVENHAM ROAD**

(200 yards from Football Ground)

Phone 4934

LARGE CAR PARK AVAILABLE

---

For Quality  
FLOWERS, FRUIT & VEGETABLES  
Also FROZEN FOODS

**CLARKE'S  
of Old Swindon**

Proprietors: A. G. G. & J. A. W. HUNT

64 DEVIZES ROAD - SWINDON

'Phone: 22337

ORDERS DELIVERED



# SWINDON TOWN FOOTBALL COMPANY LIMITED

Registered Office: COUNTY GROUND, SWINDON

—♦—  
Directors:

Mr. W. J. CASTLE (Chairman)

Mr. H. E. LANE (Vice-Chairman)

Mr. B. T. HAMILTON (Hon. Treasurer)

Messrs. C. CHANDLER, J.P., J. DAVIES,

R. FRICKER, C. J. GREEN, F. PLYER, H. WILLIAMS and K. H. WILMER

Manager: B. J. HEAD.

Secretary: R. A. MORSE

---

**VOL. 12**

**SATURDAY, APRIL 21st, 1962**

**No. 27**

---

## Club Notes

Swindon 6, Halifax 0

Some of the best entertainment seen on the County Ground this season. In a different way equally as good as the previous Monday — All Stars match.

Our lads certainly put on a great show, especially in the first half. Playing delightful football they were soon three goals up; and how the crowd enjoyed it.

It is a long time since we heard such an enthusiastic reception given to the team, when they left the field at half-time, having scored five goals. Without taking any credit from our lads for their grand display, we felt the goalkeeper might have saved at least two of the goals. What a magnificent effort on the part of all concerned to score the

second goal. One of the finest worked goals scored by our team, and the fourth scored by Ernie Hunt from Mike Summerbee's free kick, was certainly a well-planned effort.

A splendid all-round performance by everyone, and again the goalkeeper kept a blank sheet, doing a sound workmanlike job. May we see repeat performances in our remaining home games, Newport County today and Port Vale on Monday, 30th April.

It seems our team thrives on the more games it plays, as we are certainly very busy. On Monday we play at Torquay, at Southend on Saturday, 28th April, and then Port Vale. There is also to be fitted in the benefit game against Aston Villa for Arnold Darcy and Peter Chamberlain. We hope all spectators will support this match for two excellent clubmen.



---

**THE WALCOT CHEMIST**

WIDE RANGE OF COSMETICS, PERFUMES,  
BABY NEEDS AND PHOTOGRAPHIC GOODS

10 SUSSEX SQUARE - WALCOT

TEL. 6680

**M. J. REYNOLDS**

*Grocer*

152/154 CRICKLADE ROAD

5479 SWINDON 5479

COOKED HAM OUR SPECIALITY

---

**WATSON'S  
CENTRAL NEWSAGENCY**

LTD.

*Swindon's Leading Wholesaler*

1 WELLINGTON STREET, SWINDON

Tel. 22049

---

**L. WOLLEN**

OFF LICENCE

*WINES & SPIRITS*

Arkell's Ales and Stout

373 Cricklade Rd., Swindon

Deliveries Daily

Phone 3508

---

**SWINDON TOWN F.C. SUPPORTERS' CLUB**

THE OFFICIAL HANDBOOK FOR 1962 IS NOW ON SALE.

PRICE: ONE SHILLING. THESE MAY BE OBTAINED AT

THE SUPPORTERS' CLUB ROOM OR FROM ANY

MEMBER OF THE COMMITTEE.

---

FOR ALL YOUR ANGLING NEEDS  
CONSULT

**FRANK WOODWARD**

Swindon's Fishing Tackle Specialist

25 HAVELOCK ST., SWINDON

PHONE 3879

---

WE ARE SPECIALISTS IN —  
OUTSIDE CATERING AND LICENSED BARS  
FOR WEDDINGS, FETES, SPORTS DAYS, etc.

**THE MASONS ARMS  
HOTEL**

31 HIGH STREET - SWINDON 3522

---

**H. E. LANE**

(REGENT STREET) LTD.

*The Pork Sausage Specialists*

117 Victoria Road, Swindon

Telephone: 22336

---

**COMLEY'S**

*Modern Music Centre*

26 HAVELOCK ST., SWINDON

RECORDS - MUSIC - INSTRUMENTS

Top Twenty "Pops" always in stock  
and wide selection of Jazz and Classics

PERSONAL SUPERVISION

Phone 3874



---

## KEY OF THE BOARD

Half-time scores will be given in two sections. First Section indicated by **[1]**. Second Section indicated by **[2]**.

### FIRST SECTION

- A—Aston Villa v. Leicester
- B—Blackburn v. Bolton
- C—Blackpool v. Manchester C.
- D—Chelsea v. Ipswich
- E—Manchester U. v. Everton
- F—Nottingham F. v. Sheffield W.
- G—Sheffield U. v. Burnley
- H—Tottenham H. v. West Brom. A.
- I—West Ham v. Arsenal
- J—Wolverhampton v. Fulham
- K—Bristol R. v. Walsall
- L—Bury v. Huddersfield
- M—Charlton v. Swansea
- N—Leeds v. Derby
- O—Liverpool v. Southampton
- P—Norwich v. Leyton O.
- Q—Rotherham v. Luton
- R—Sunderland v. Newcastle
- S—Bournemouth v. Bristol C.
- T—Crystal P. v. Port Vale

### SECOND SECTION

- A—Halifax v. Southend
- B—Hull v. Grimsby
- C—Lincoln v. Brentford
- D—Northampton v. Coventry
- E—Portsmouth v. Peterborough
- F—Torquay v. Reading
- G—Watford v. Bradford
- H—Aldershot v. Workington
- I—Bradford C. v. Doncaster
- J—Hartlepoons v. Mansfield
- K—Oldham v. Chesterfield



---

# Our Visitors

## NEWPORT COUNTY A.F.C.

The Club was formed in 1912. Joined 2nd Division of old Southern League. First match versus Mid-Rhondda at Somerton Park, September, 1912. Joined 1st Division Old Southern League 1919 which was absorbed into new Third Division, Football League 1920-21. Promotion to Second Division Football League 1938-39. Relegated to Division Three end of season 1946-47.

Record gate October, 1937, v. Cardiff City, 24,268. Season 1938-39 (promotion year) team headed table from 8th October to the end of season.

Best Cup-run season 1948-49 ended at Portsmouth in 5th Round. Lost 3-2 after extra time.



## PEN PICTURES

### LEN WEARE (Goalkeeper)

A local product, joined the County in January, 1955, made his first appearance in League football during season 1955-56. Has been regular choice ever since for the first team. Chosen Reserve Goalkeeper for Wales in World Cup Competition 1956/57.

### JOHN BIRD (Right Back)

Started as amateur on Ground Staff and signed professional in November, 1957. A young lad who has made for himself a regular first team place.

### JOHN ROWLAND (Left Back)

Who also plays in the left-half position. Previously an amateur with County from 1951-54. Played for Lovells Athletic as professional 1957-58. Capped for Welsh Under-23's a few seasons ago.

### DUDLEY PEAKE (Centre-Half)

A native of Swansea and with Swansea from 1956-58. Transferred to Newport in June, 1958.

### ANDY BOWMAN (Left-Half)

Scottish Schoolboy Caps v. Wales and England. Previous clubs Chelsea and Heart of Midlothian. Two League Cup Winners medals. Two League Championships medals with Hearts. Signed for Newport this summer.

### JAMES ROBERTSON (O.R.)

Previous clubs, Edinburgh Thistle and Aberdeen. Signed for Newport this close season.

### ALLAN FINLAY (Inside-Right)

Previous Clubs, Heart of Midlothian F.C. and Barry Town. Honours: Scottish School and Youth Caps.

### JOHN BUCHANAN (C.-Forward)

Previous Clubs, Edinburgh, Waverley. Turned professional 1954. With Hibernians for seven years and then Raith Rovers. Joined Newport this close season.

### GEORGE HARRIS (O. Left)

Played for S. London schoolboys. Signed amateur with Tottenham after leaving school, whilst with Spurs played for London F.A. XI. Joined Fulham and played in their Combination team, also played for Woking and then signed professional for Newport this close season.



---

## C. Dunn & Son

BUILDERS & DECORATORS

Alterations, Renovations, Conversions  
Plumbers and Sanitary Engineers  
503 CRICKLADE ROAD Tel. 22522

---

## NOTTON'S CAFE

COUNTY ROAD

200 yards from Ground

**RIGHT ON THE BALL**

---

FOR PAINTS OF GOOD QUALITY

## H. S. HODGES & SONS (SWINDON) LTD.

CRICKLADE ROAD - SWINDON  
PHONE 22422

Dulux, Brolac, Friary, Valspar, Wallcharm, etc.

---

## Harold Fleming

24 REGENT CIRCUS - SWINDON  
Phone 22813



FOR ALL SPORTS EQUIPMENT  
Also, Scout, Guide, Cub and Brownie Wear

---

### OUR VISITORS—continued

#### KEITH FRY (Outside Right)

Amateur with Newport 1958-59.  
Signed professional forms in October, 1958, has been a fairly regular first team player since.

#### BILLY HERRITTY (I.-F.)

Amateur with Newport 1954-57, and then signed professional forms. Has made a number of first team appearances whilst on Army Service.

#### ALAN HERRITTY (F.-B.)

Amateur with Newport 1957-58, signed professional in December,

1958. A promising player who has made a number of first team appearances.

#### JOHN CLARKE (Goalkeeper)

Previously amateur with Newport and signed professional in May, 1959.

#### DAVID WILLIAMS (Half-Back)

Amateur with Newport 1959-60 and signed professional in November, 1959.

#### BOB SCOTT (Half-Back)

Following his release by Swindon, was signed by Newport. Formerly with Cardiff City.

---

## GODDARD & Co.

*Wholesale and Retail*

WINE - SPIRIT - BEER  
AND CIDER MERCHANTS

9 REGENT STREET, SWINDON  
Telephone 22415

Also at  
4 WINGATE PARADE, SWINDON

---

We are your **Main Distributors** for  
**VAUXHALL** and **JAGUAR** cars  
**BEDFORD** Vans and Trucks, etc.

Any make of Car or Truck  
supplied - Used Vehicles a  
specialised part of our  
business.

**SKURRAY'S**  
**SWINDON**

Telephone: 22266



# H. HIBBERD LTD.

Plant Hire Contractors

\*\*\*

TRACTORS and SCRAPERS  
BULLDOZERS  
DROTT SHOVELS  
DIGGERS  
ROAD ROLLERS

\*\*\*

40 NEWPORT STREET, SWINDON

Telephone 6125

# Swindon Bacon Curing Co. Ltd.

Specialists in  
Bacon, Pork & Cooked Ham

50 FLEET STREET

SWINDON

Telephone: 22122

# WARNES (Swindon) Ltd.

Electrical Contractors  
Radio and Television

Contractors to:

SWINDON TOWN FOOTBALL CLUB

51/52 COMMERCIAL RD., SWINDON

'Phone 6346/7

160 COUNTY RD., SWINDON

'Phone 6346/7

9 SWINDON ST., HIGHWORTH

'Phone 379

7 CLIVE PARADE, SWINDON

'Phone 6346/7

## DAY RETURN TICKETS

On Weekdays and Sundays (services permitting), available in each direction by any train the same day. From Swindon Junction to:-

	2nd Class
Bath Spa	7/6d.
Bristol (T.M.)	9/0d.
Weston-super-Mare	11/6d.

Other fares available. Ask for pamphlet B7/411, giving full information.

**BRITISH RAILWAYS**

Western Region

# W. B. CARTER

Newsagent, Tobacconist and Confectioner  
Large selection of Boxes of Chocolates  
always in stock

CORONA, TIZER, DRINKS, etc.

Agents for Wall's Ice Cream

\*\*\*

188/190 FERNDALE RD., SWINDON

Telephone: 3089

# MILLS & MER

SWINDON TOWN v. NEWPORT COU

SWINDON T

RIGHT WING

Colours: RED SHIRTS,

Turner

Wollen (2)

Morgan (4)

Owen (5)

Summerbee (7) Hunt (8) Smith (9)

Referee—

Mr. K. A. Collinge  
(Altrincham)



Harris (11) Smith (10) Buchanan

Bowman (6) Peake (7)

Rowlands (3)

Weare

NEWPORT CO

LEFT WING

These teams are subject

16-17 BRIDGE ST. S

ENGLAND'S QUALITY  
SERVICE

Your Car washed in un

# THE INSTANT

6/- ANY MAKE —

Local Station

MARLBOROUGH ROAD  
SWINDON

QUEENS ROAD  
READING



Make your goal . . .

# McILROYS RESTAURANT

Top of the Catering League  
 COFFEE - LUNCHES - TEAS  
 Parties catered for.  
 Regent Street, Swindon. Tel. 5294

## THE PLESSEY COMPANY Ltd.

After years of achievement have great expansion plans for the future.

- TECHNICAL STAFF
- CLERICAL STAFF
- MANUAL WORKERS

are essential for this progress.

Interested persons please apply to the Personnel Department.

## MERRICKS LTD.

**WILTSHIRE COUNTY**                      Kick-off 3 p.m.  
**SWINDON TOWN**  
 10 SHIRTS, WHITE SHORTS              LEFT WING  
 Turner  
     Trollope (3)  
 Owen (5)              Woodruff (6)  
 Smith (9)              Atkins (10)              Darcy (11)  
     Linesmen —  
     Red Flag —  
     Mr. K. R. B. Hale  
     (Bristol)  
     Yellow Flag —  
     Mr. J. C. Nicholas  
     (Chippenham)  
 Buchanan (9)              Moffat (8)              Walsh (7)  
 Peake (5)              Scott (4)  
     Thomas (2)  
 Weare  
**WILTSHIRE COUNTY**  
 are subject to alteration              RIGHT WING



UPHOLSTERERS • REMOVALS

**T. SWINDON**              PHONE 5365

## QUALITY CAR WASHING SERVICE

in under 5 minutes by  
**WINDSOR CAR WASH**  
 £1 — 4 WASHES £1

Stations:  
**WINDSOR ROAD**              **QUEENS ROAD**  
**READING**                      **BRISTOL**

INSIST ON

# Garrard EQUIPMENT



For Superb Tape and Record Playing



Fitted by the World's leading manufacturers.

## WILSONS (SWINDON) LTD.

BUILDERS OF  
 MODERN ATTRACTIVE HOUSES  
 AND BUNGALOWS

All enquiries to Head Office:  
**90 COMMERCIAL ROAD**  
**SWINDON 6361-3**



ONE QUALITY ONLY—THE BEST!  
FRESH SUPPLIES DAILY

## York Road Fisheries SWINDON

WET, DRY or FRIED Tel.: 3680

**DEMPSTER ENTERPRISES**, offer a modern fleet of 4 and 6 seater self-drive hire cars, for your pleasure and convenience. For advance bookings apply:-

**Dempster Enterprises**  
38 VICTORIA ROAD, SWINDON  
Tel. 6460

Rent your T.V. - Washing Machines  
Spin Dryers - Electrical Installations  
from

**D. V. HOLLAMBY LTD.**  
138 High St., Wootton Bassett, Wilts.  
Telephone 295  
ALL LEADING MAKES IN STOCK

**Howard Autos**, Swindon's Main Cotton Motor Cycle distributors always have a good selection of guaranteed used cars for you to choose from.

**HOWARD AUTOS**  
134/5 MANCHESTER ROAD  
Tel. 6603  
and at 3 WELLINGTON STREET, SWINDON

## HALF-TIME JACKPOT DRAW

TODAY'S WINNING NUMBERS WILL BE ANNOUNCED AT  
HALF-TIME.

The following will assist you to record the numbers and prizes as announced.

1st PRIZE	No.....	Amount £.....
2nd PRIZE	No.....	Amount £.....
3rd PRIZE	No.....	Amount £.....
4th PRIZE	No.....	Amount £.....

Winning numbers will also be published in "Evening Advertiser"

### 'BAILEY'S'

2 Cheney Manor Road - Swindon  
NEWSAGENT :: TOBACCONIST  
CONFECTIONER  
Personal Attention and Satisfaction  
always assured.

MEET YOUR FRIENDS FOR AN  
ENJOYABLE EVENING AT

### THE KINGSDOWN INN

(Host A. W. Vann)  
FULLY LICENSED - ARKELL'S BEERS  
SNACKS, Etc.  
Stratton St. Margaret Tel. 3283

### A. WHEELER & SON

330 CRICKLADE ROAD

PHONE 22095

FOR QUALITY COALS  
AND PROMPT SERVICE

Lowest Terms for Self Drive Cars  
\* \* \*  
Free Deliveries - Glasses loaned free  
for your Wines, Spirits and Beers  
115 CRICKLADE ROAD  
"The Corner Off Licence"  
Ring 4711 or call at



---

# Supporters' Club Notes

These notes are being written prior to the match against Halifax Town, so that by this time the League position may have altered.

Nevertheless, we feel that supporters would wish to pay tribute to the players who produced a series of gratifying results with the resultant improvement in the appearance of the League table.

Several months ago, few would have predicted that Reading and Swindon would be near neighbours otherwise than geographically, but a decline in Berks and an improvement in Wilts has brought the two teams close in the League table at the time of writing.

It is curious how, season after season, however these teams fare at the beginning, they usually figure in the "average areas" at the end.

A number of promotion and relegation problems remain to be settled. There will be jubilation in some towns and disappointment in others. The results of the Easter matches will, no doubt, clarify a number of things.

Even to the clubs gaining honours there will be a number of headaches. Will a team which did well in one Division be strong enough to hold its own in higher company?

Several years ago a Director of a club which gained promotion to Division II, and was relegated after two seasons, told us that his Board would never again embark on extra-

ordinary expenditure on players, either to "go up" or to "stay up", but would chance the luck with the staff available. The support was there in the promotion effort, but, when relegation was near, the gates were less than when they were in Division III.

This club now has more than an outside chance of promotion again to Division II, but we have not heard of any "fancy" transfer fees being paid, and even now, gates are indifferent.

We feel that in Swindon the position is somewhat different, and that having regard to the overall record during the season, supporters may be congratulated on the average attendance which has been maintained.

The results of the opening matches were disastrous, and we have no doubt that in many towns attendances would have declined very seriously before the improvement came.

We have been gratified to learn that as many First team matches as possible will be played on Saturdays next season, and that, if it can be arranged, the Reserve matches will not be played in midweek. The Directors could not be blamed for experimenting as elsewhere, and should be congratulated in their endeavour to rectify the position at the earliest opportunity.



## FIXTURES AND RESULTS TO DATE

DIVISION III		
1961		
Aug. 19	Portsmouth	H 1-3
21	Coventry City	A 1-2
26	Crystal Palace	A 1-3
29	Coventry City	H 3-3
Sept. 2	Bournemouth	H 1-1
4	Queen's Park R.	A 1-6
9	Watford	A 0-2
16	Hull City	H 1-1
19	Barnsley	H 1-1
23	Northampton T.	A 2-1
27	Barnsley	A 2-6
30	Lincoln City	H 4-0
Oct. 3	Grimsby Town	H 0-0
7	Brentford	A 0-1
10	Grimsby Town	A 1-0
13	Reading	H 4-1
17	Queen's Park R.	H 0-0
21	Bristol City	A 3-5
28	Bradford	H 3-2
Nov. 4 (1)	Kettering T.	H 2-2
8	Kettering T.	A 0-3
11	Shrewsbury Tn.	H 1-2
18	Peterborough U.	A 2-3
25 (2)		
Dec. 2	Newport County	A 2-2
9	Southend U.	H 0-0
16	Portsmouth	A 2-2
23	Crystal Palace	H 5-0
26	Halifax Town	A P
1962		
Jan. 6 (3)	Notts County	A P
13	Bournemouth	A 0-0
20	Watford	H 3-1
27 (4)	Port Vale	H P
Feb. 3	Hull City	A 1-0
10	Northampton T.	H 2-2
17 (5)	Lincoln City	A 2-2
23	Brentford	H 5-2
Mar. 2	Reading	A 1-1
10 (6)	Bristol City	H 0-4
17	Bradford	A 2-2
19	Halifax Tn.	A 0-2
23	Notts County	H 1-0
31 (S.F.)	Shrewsbury	A 3-1
Apr. 7	Peterborough U.	H 3-2
12	Notts C.	A 1-0
14	Port Vale	A 1-1
16	Halifax Tn.	H 6-0
20	Torquay Utd.	H.....
21	Newport County	H.....
23	Torquay Utd.	A.....
28	Southend Utd.	A.....
30	Port Vale	H.....
May 5 (Final)		

FOOTBALL COMBINATION		
1961		
Aug. 22	Leyton Orient	H 0-0
Sept. 6	Southend Utd.	A 1-3
13	Portsmouth	A 1-7
20	Bournemouth	A 0-3
26	Birmingham	H 1-1
Oct. 4	Aldershot	A 1-2
10	Watford	H 1-3
Nov. 1	Millwall	A 0-1
7	Fulham	H 1-4
14	Southampton	H 2-0
22	Coventry City	A 2-1
29	Reading	A 1-3
Dec. 5	Brighton	H 4-2
12	Brentford	A 3-1
19	Charlton	H P
1962		
Jan. 3	Chelsea	A P
9	Chelsea	H 0-0
17	Leyton Orient	A 1-2
23	Portsmouth	H 2-0
31	Birmingham City	A 1-1
Feb. 6	Bournemouth	H 3-2
13	Watford	A 1-3
20	Aldershot	H 5-0
26	Queen's Park R.	A P
Mar. 6	Millwall	H 3-1
14	Fulham	A 1-1
20	Southend Utd.	H 3-1
28	Southampton	A 0-0
Apr. 2	Chelsea	H 4-0
3	Coventry City	H 1-2
10	Reading	H 2-0
17	Brighton	A.....
23	Brentford	H.....
26	Q.P.R.	H.....
28	Charlton	H.....
May 2	Charlton	A.....



The Rendezvous of all Sportsmen . . .

## THE CROWN INN

(Host: Frank Pleyer)

Arkell's Best Ales : Fully Licensed  
Snacks, etc.

STRATTON ST. MARGARET Tel. 2339

SUPPORT YOUR HOME

## CIVIL DEFENCE

Plays a vital part in saving lives

Particulars:

CIVIC OFFICES - SWINDON

WIN OR LOSE !

THE FOOD IN THE

## China Restaurant

IS BEST

\* \* \*

107 COMMERCIAL ROAD

SWINDON 6888

Open Daily 12 noon - 11.30 p.m.

For all Chinese and English Dishes

Have you purchased your ticket for the

# HALF-TIME JACKPOT DRAW

TICKETS 6d. EACH on sale on the Ground  
FOUR PRIZES

Result of Draw on Monday, 16th April, 1962

1st Prize—£21.13.6. Ticket No. 12142

2nd Prize—£16.5.0. Ticket No. 6705

3rd Prize—£10.17.6. Ticket No. 1680

4th Prize—£5.8.6. Ticket No. 2101

TODAY'S WINNING NUMBERS WILL BE ANNOUNCED AT  
HALF-TIME

## COATE GARAGE



THE ALCOHOL FUEL

REPAIRS  
SERVICING  
TYRES

★

OVERHAULS  
REBORING  
WELDING

Props.: E. V. & W. H. Mattick

MARLBOROUGH ROAD, SWINDON

For something a little different, try

## DON JONES

HIGH CLASS CONFECTIONER  
AND TOBACCONIST

Always a good selection of  
SUCHARDS' - TOBLER  
TERRY'S

Quality Chocolates and Presentation  
Boxes

112 COMMERCIAL ROAD

6012

SWINDON

6012



# Typewriters from £10

FULLY GUARANTEED

**DOBELL SHEARMAN  
& CO. LTD.**

26 HIGH ST. & 33 FARINGDON RD.,  
SWINDON Telephone 4961

Only 800 yards to your Dream Car—

**NEW ALPHA MOTOR Co.**  
(SWINDON) LTD.

**QUEENS DRIVE, SWINDON**

Tel. 5062/63

FOR TOP QUALITY USED CARS

Open 7 days per week from 7 a.m. to 10.30 p.m.  
Servicing for all makes of cars

## FOOTBALL COMBINATION

### MID-WEEK SECTION

	P.	W.	D.	L.	F.	A.	Pts.
Birmingham City .....	31	17	7	7	52	29	41
Leyton Orient .....	29	18	4	7	57	32	40
Portsmouth .....	29	17	4	8	61	40	38
Millwall .....	30	14	8	8	79	55	36
Watford .....	30	16	3	11	70	49	35
Chelsea .....	31	15	4	12	74	56	34
Bournemouth .....	30	14	6	10	57	46	34
Reading .....	31	14	5	12	57	49	33
Southend .....	31	15	2	14	57	61	32
Southampton .....	28	12	5	11	56	46	29
<b>Swindon Town .....</b>	<b>28</b>	<b>11</b>	<b>6</b>	<b>11</b>	<b>45</b>	<b>44</b>	<b>28</b>
Coventry City .....	30	12	4	14	59	57	28
Fulham .....	29	11	5	13	47	62	27
Aldershot T. ....	29	9	8	12	42	56	26
Charlton A. ....	30	9	4	17	40	61	22
Brighton .....	30	5	7	18	34	72	17
Queen's Park R. ....	26	6	4	16	32	67	16
Brentford .....	30	4	8	18	29	66	16

### Chappell's Funeral Service

(Fun. Dir.: A. A. Winchcombe)

196 COUNTY ROAD  
SWINDON

24 hour Service Tel. 6073

Your local "TEAM" for RENAULT  
Sales and Service

## CORONATION CAR SALES

67/68 VICTORIA ROAD

Telephone 4964



---

**SEA VIEW HOLIDAY  
CAMP**

YOUR HOST — Mr. BENNETT

\*\*\*

**WYKE REGIS - WEYMOUTH  
Dorset**

"COAL!"  
"COAL!"  
"COAL!"

**J. WILMER**

ST. MARGARET'S ROAD, SWINDON  
Telephone 22535

---

MEET YOUR FRIENDS AT THE

***Southbrook Inn***

(Hosts: Mr. and Mrs. Jack Scutts)

FULLY LICENSED  
CLINCH BEERS, ETC.

SOUTHBROOK STREET, SWINDON  
Tel.: 5837

**STOP! LOOK!**

**NU-HOMES**

For all Household Fitments  
Paints - Emulsions - Wallpapers  
Kitchen Units and Bathroom Suites,  
etc.

176a Manchester Road  
TELEPHONE 22178

---

**FORTHCOMING MATCH . . .**

FOOTBALL COMBINATION

**SWINDON TN. v. Q.P.R.**

THURSDAY NEXT, APRIL 26th, 1962

Kick-off 7.30 p.m.

---

**BRITANNIA  
MOTORS**

Proprietor: A. GODWIN

205-206 RODBOURNE ROAD  
SWINDON PHONE 5303

- TYRES  
NEW AND REMOULD  
CASH OR EASY PAYMENTS
- ACCESSORIES
- QUICK SERVICE AND REPAIRS  
AT SWINDON'S MOST MODERN  
LUBRICATION BAY AND  
WORKSHOP

*For High Class  
Central Heating, Plumbing  
Painting and Decorating  
Electrical Installations  
and Repairs*

•  
**NORTH WILTS**

Sanitary & Heating  
Co. Ltd.

**NEWPORT ST., SWINDON**

'Phone: 5373/4



Always at your service

**L. BIBBY**

For all Types, Rags, Iron and Metal,  
etc. Spot Cash Paid. Please Telephone  
2101 and our van will call.

THE PADDOCK, ERMIN STREET  
STRATTON ST. MARGARET

**Walcot Greengrocer**

G. E. STAMMERS

✽

**1 SUSSEX SQUARE  
SWINDON**

SWINDON **22526**

*CAN ALSO BE YOUR LUCKY NUMBER !!!  
if you ring*

**HOLMES & LUCAS**

14A REGENT STREET :: SWINDON

*for all your*

**TELEVISION, RADIO AND ELECTRICAL REQUIREMENTS**

**LUCKY PROGRAMME**

Please retain your programme. An announcement will be made at half-time of two numbers and the holders will be given a stand seat at the next Division III game. The persons who purchased the programmes bearing the winning numbers should call at the office after the game and claim their seats.

962

**FRIED FISH AND CHIPS**

Always Fresh - Always Hot

**WALCOT FISHERIES**  
**Sussex Square**

Wet fish and frozen foods all refrigerated display.

**HATTON'S NEWSAGENCY**  
A. J. D. WOODHOUSE & A. SMITH  
Newsagents & Tobacconists & Confectioners  
Agents for Vessex School of Motoring  
Main Booking Agents for Millers Coaches  
6 REGENT CIRCUS (NEAR G.P.O.)  
Telephone Swindon 22731

For Insurance or Hire Purchase  
CARS - CARAVANS - MOTOR CYCLES, etc.  
Consult

**D. & H. HENTY LTD.**  
54 COMMERCIAL RD., SWINDON  
SWINDON 5258

**PANKHURST**  
**The Palace, Gorse Hill,**  
**Swindon**

MOTOR CYCLE - SCOOTER AND  
THREE-WHEELER SPECIALISTS

Open Mon. to Sat. 9 a.m. - 8 p.m. Phone 5466

**MORGAN'S** IRONMONGERS  
**C.A.S.M.S. (Swindon) Ltd.**

2 SUSSEX SQUARE, WALCOT, SWINDON  
also at 163 RODBOURNE ROAD Tel. 22516  
Paraffin services to all areas town and country  
Everything for the home  
Precision Tools for Engineering Trade,  
Tools for all trades

**Maylott Studios**

For GROUP & SPORT Photographs  
OFFICIAL PHOTOGRAPHER TO  
SWINDON TOWN FOOTBALL CLUB  
**31 FARINGDON RD. Tel. 22792**